



## Electrical Test Equipment

---

### Edgewise Model E-20, CK-256 and CK-257 Panel Meter



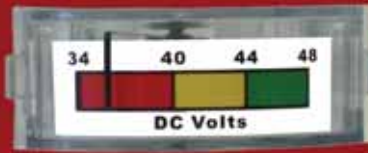
These edgewise meters are suitable for many applications requiring a low cost solution. The standard case is polystyrene, however UL Polycarbonate is available. Accuracy is +/- of full scale and most AC/DC ranges are available.

### Features & Benefits

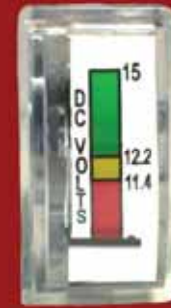
- **Typical Uses**  
Test Equipment, Power Supplies, Emergency Lighting, Chargers, Recreational Equipment, etc.
  - **Features**  
Quick Snap in ears, No brackets required!!
-

# Edgewise Analog Panel

The E-20 and CK-150 Series edgewise meter are suitable for many applications requiring a low cost solution. The standard case is polystyrene, but UL Polycarbonate is available. Accuracy is  $\pm 5\%$  of full scale and most AC/DC ranges are available. Typical uses include test equipment, power supplies, emergency lighting chargers, recreational equipment, etc. Features quick snap in ears...no brackets required!

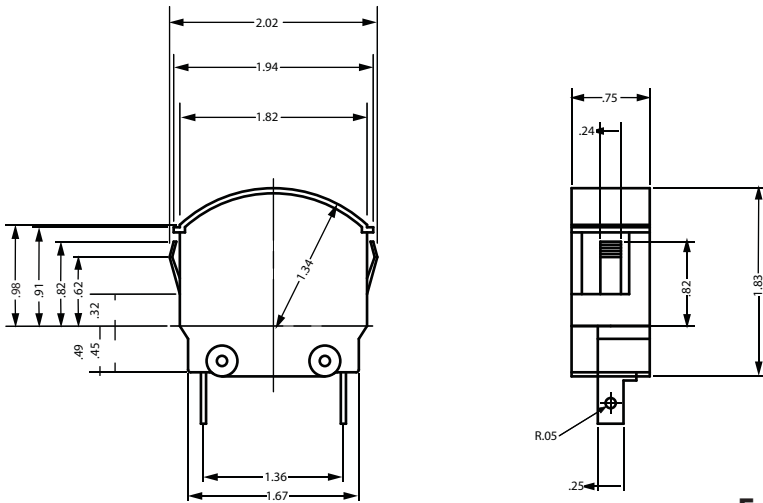


**E-20**  
**CK-256**  
**CK-257**

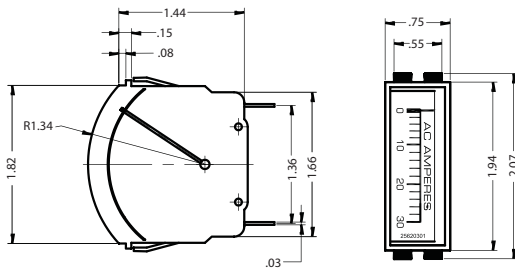


**CK-150**  
**CK-160**

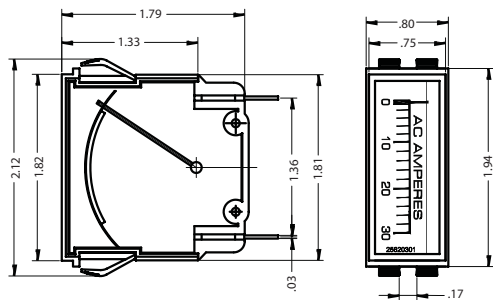
## DIMENSIONS:



**E-20**  
**(Polycarbonate)**



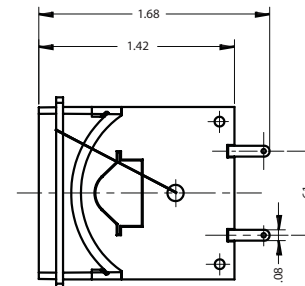
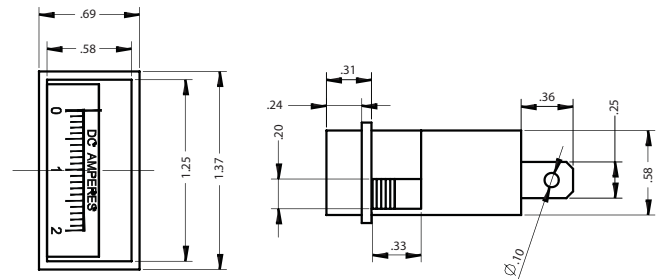
**CK-256**



**CK-257**



**CK-150**



**CK-160**

